
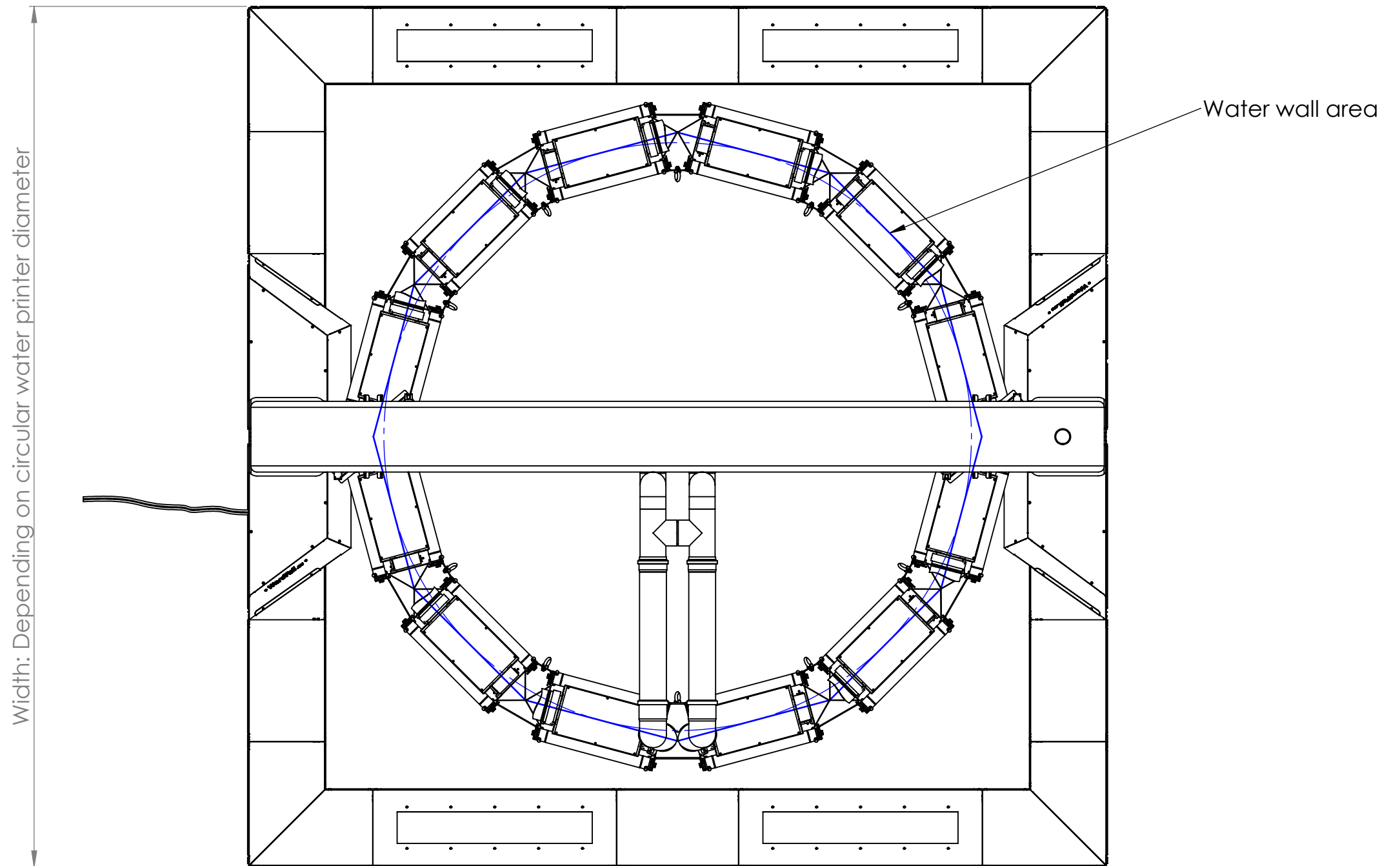



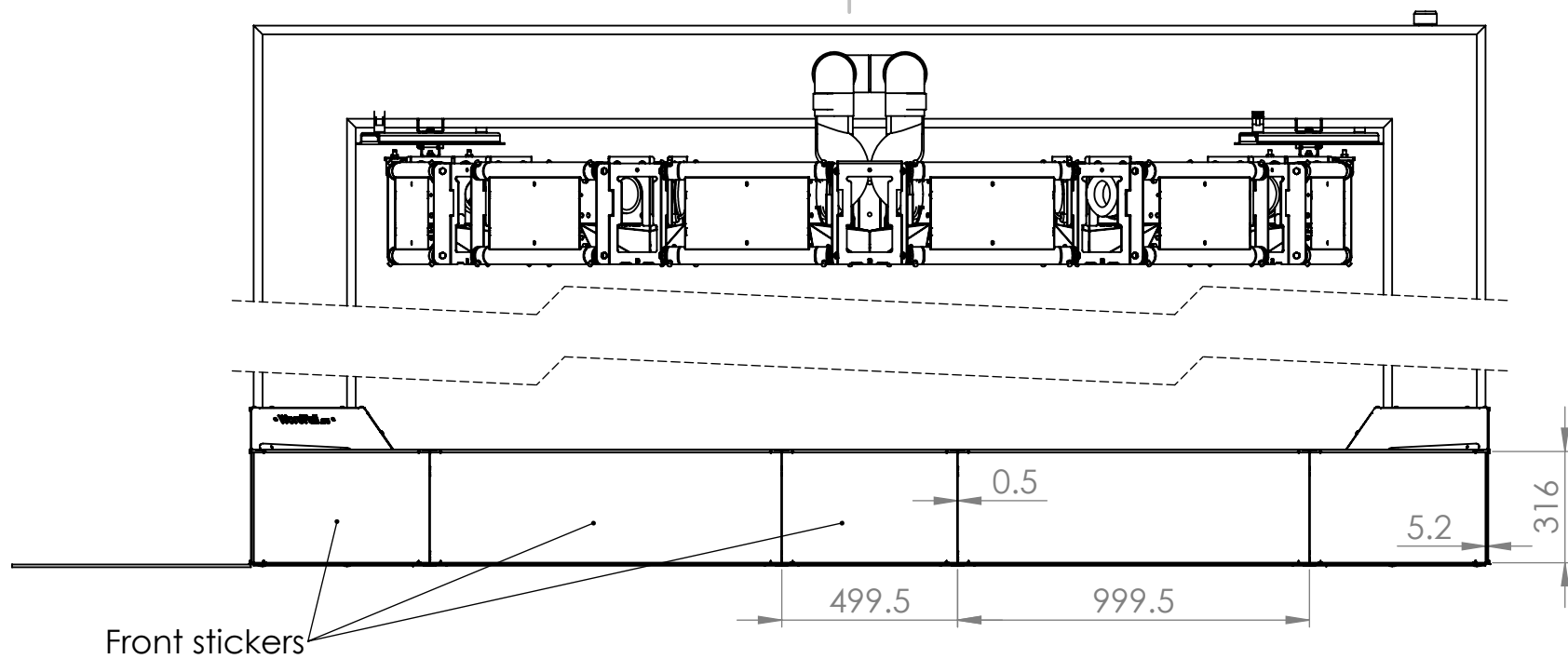
|  |                |          |   |             |              |    |
|--|----------------|----------|---|-------------|--------------|----|
| COMPANY:  Wordfall<br>Ul. Szczygłów 30<br>44-200 Rybnik |                |          | DO NOT SCALE DRAWING                        |             | REVISION     |    |
|  |                |          | TITLE<br><b>Circular water printer</b>      |             |              |    |
|  |                |          | PART NO<br><b>WFL-KK-A0129-1</b>            |             |              |    |
|  |                |          | DESCRIPTION<br>Circular mobile installation |             |              |    |
| DRAWN  | Wordfall       | TEL.     | +48601296649                                |             |              |    |
| CHK'D  | Wordfall       |          |   |             |              |    |
| APPV'D   |                |          |   |             |              |    |
| MATERIAL:  | SURFACE FINISH | K-FACTOR | THICKNESS                                   | BEND RADIUS | WEIGHT       | A3 |
|  |                |          | mm  | mm          | g            |    |
| SCALE: 1:20  |                |          |   |             | SHEET 1 OF 6 |    |

Possible dimensions (diameter x total length x total width)

- 1.6 x 3 x 3.5m (8 printing modules)
- 2.4 x 3.5 x 3.5m (12 printing modules)
- 3.2 x 4.5 x 4.5m (16 printing modules)
- 4.1 x 5.5 x 5.5m (20 printing modules)

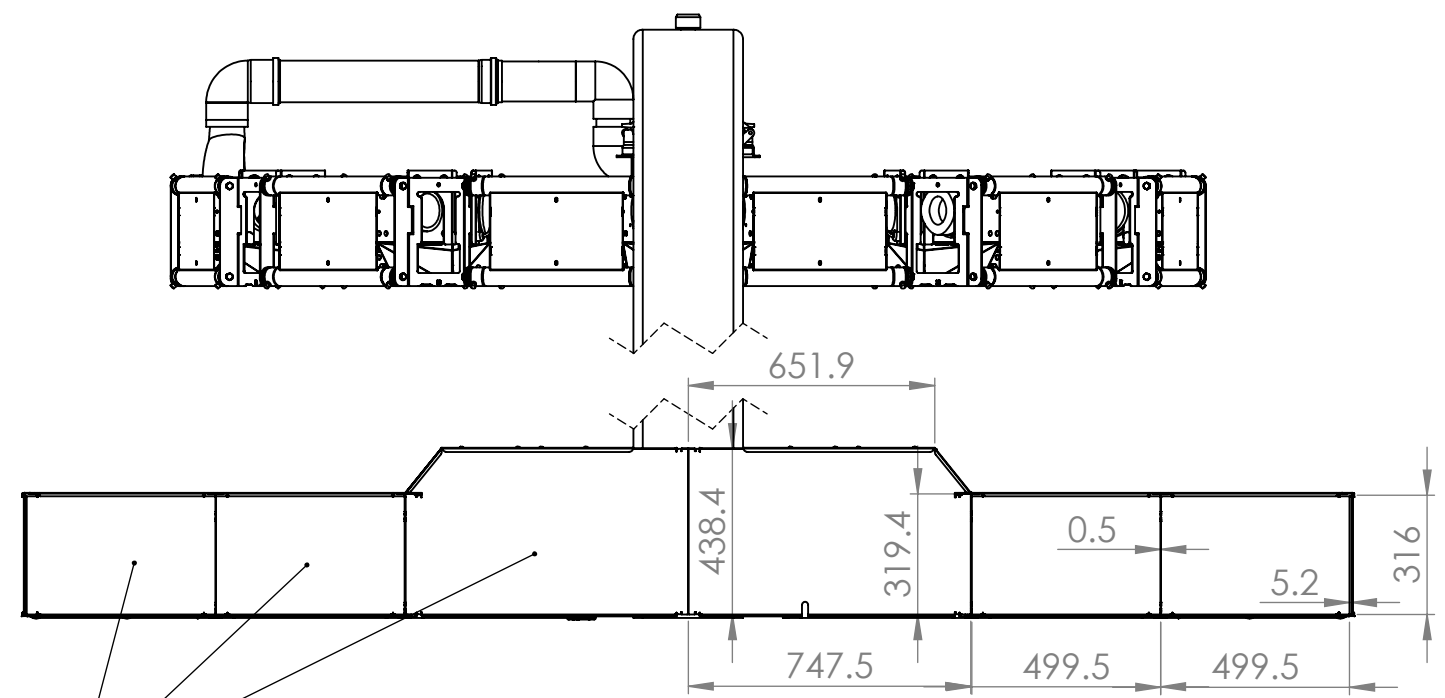


|  |                |                   |   |                 |              |    |
|--|----------------|-------------------|---|-----------------|--------------|----|
| COMPANY:  Wordfall<br>Ul. Szczygłów 30<br>44-200 Rybnik |                |                   | DO NOT SCALE DRAWING                      |                 | REVISION     |    |
|  |                |                   | TITLE: Water wall area                    |                 |              |    |
|  |                |                   | PART NO: WFL-KK-A0129-1                   |                 |              |    |
|  |                |                   | DESCRIPTION: Circular mobile installation |                 |              |    |
| DRAWN  | NAME: Wordfall | TEL: +48601296649 |   |                 |              |    |
| CHK'D  | Wordfall       |                   |   |                 |              |    |
| APPV'D   |                |                   |   |                 |              |    |
| MATERIAL:  | SURFACE FINISH | K-FACTOR          | THICKNESS: mm                             | BEND RADIUS: mm | WEIGHT: g    | A3 |
|  |                |                   | SCALE: 1:20                               |                 | SHEET 2 OF 6 |    |



FRONT


Front stickers



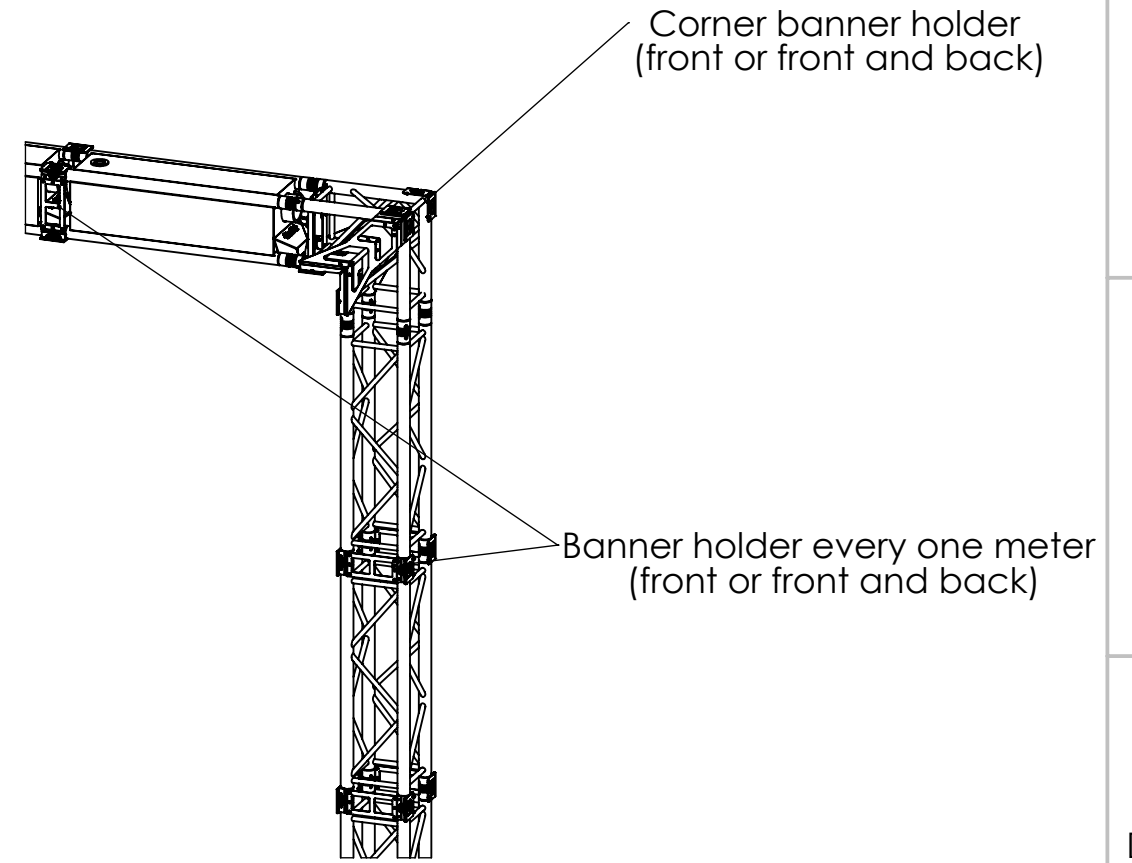
SIDE

Side stickers

All vertical walls:  
Stainless steel covered  
with black or white sticky foil  
(stickers)

|  |                |              |   |             |              |    |
|--|----------------|--------------|---|-------------|--------------|----|
| COMPANY:<br> <b>Wordfall</b><br>Ul. Szczygłów 30<br>44-200 Rybnik |                |              | DO NOT SCALE DRAWING                        |             | REVISION     |    |
|  |                |              | TITLE<br><b>Branding</b>                    |             |              |    |
|  |                |              | PART NO<br><b>WFL-KK-A0129-1</b>            |             |              |    |
|  |                |              | DESCRIPTION<br>Circular mobile installation |             |              |    |
| DRAWN  | NAME           | TEL.         | THICKNESS                                   | BEND RADIUS | WEIGHT       | A3 |
| CHK'D  | Wordfall       | +48601296649 | mm  | mm          | g            |    |
| APPV'D   | Wordfall       |              |   |             |              |    |
| MATERIAL:  | SURFACE FINISH | K-FACTOR     |   |             |              |    |
|  |                |              |   |             |              |    |
| SCALE:1:20   |                |              |   |             | SHEET 3 OF 6 |    |

- There are two ways to fix a banner
1. Slide-in (only horizontal banners)
  2. Using screws (both horizontal and vertical)



Banners and stickers should be delivered by the client  
 Banners can be placed on the front side or front and back side

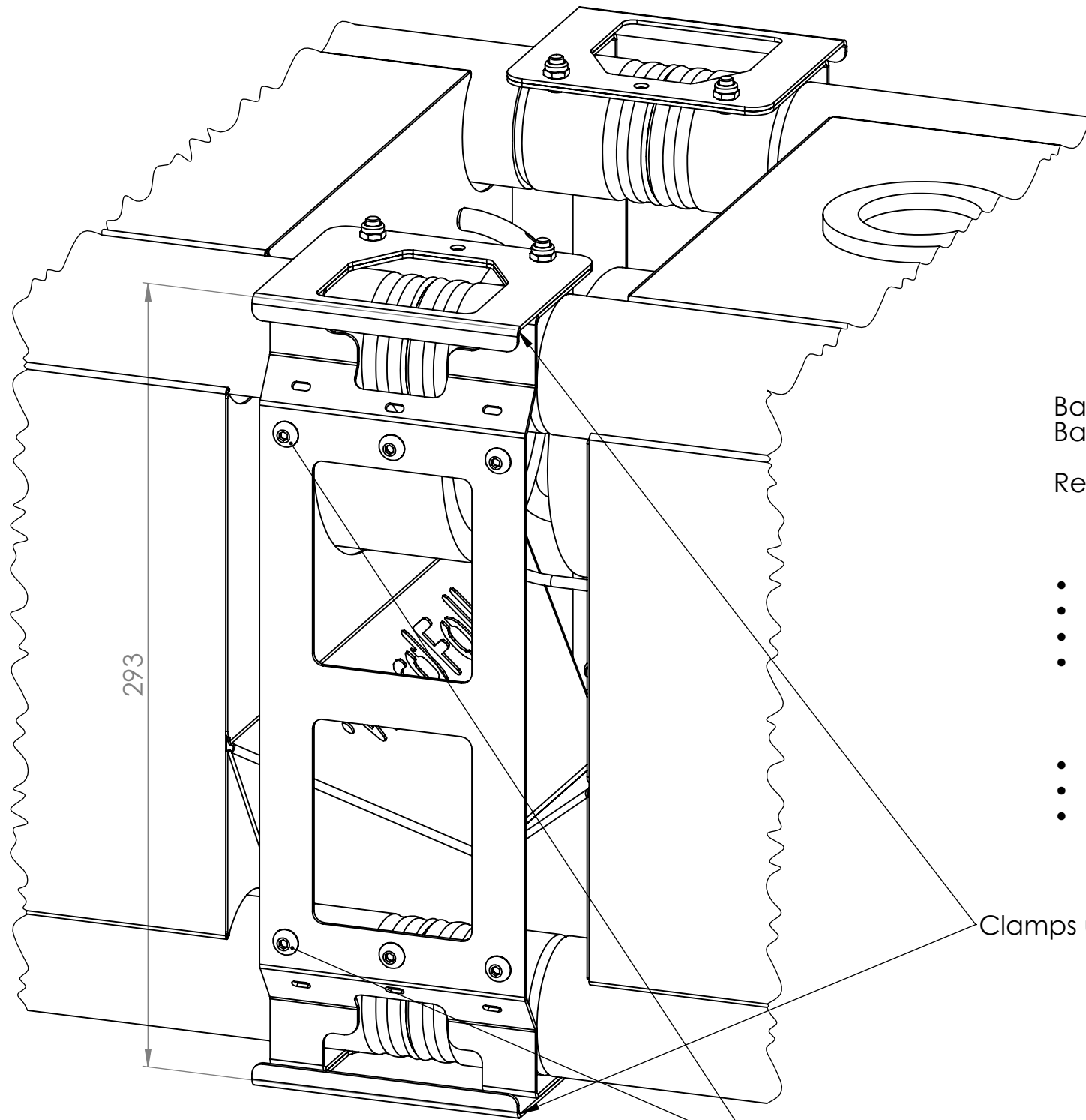
Requirements:

Slide-in banner:

- Thickness: 3-5mm
- Height: 290mm +/-2mm
- Length: total length of the construction
- No holes necessary


Screw-fixed banner:

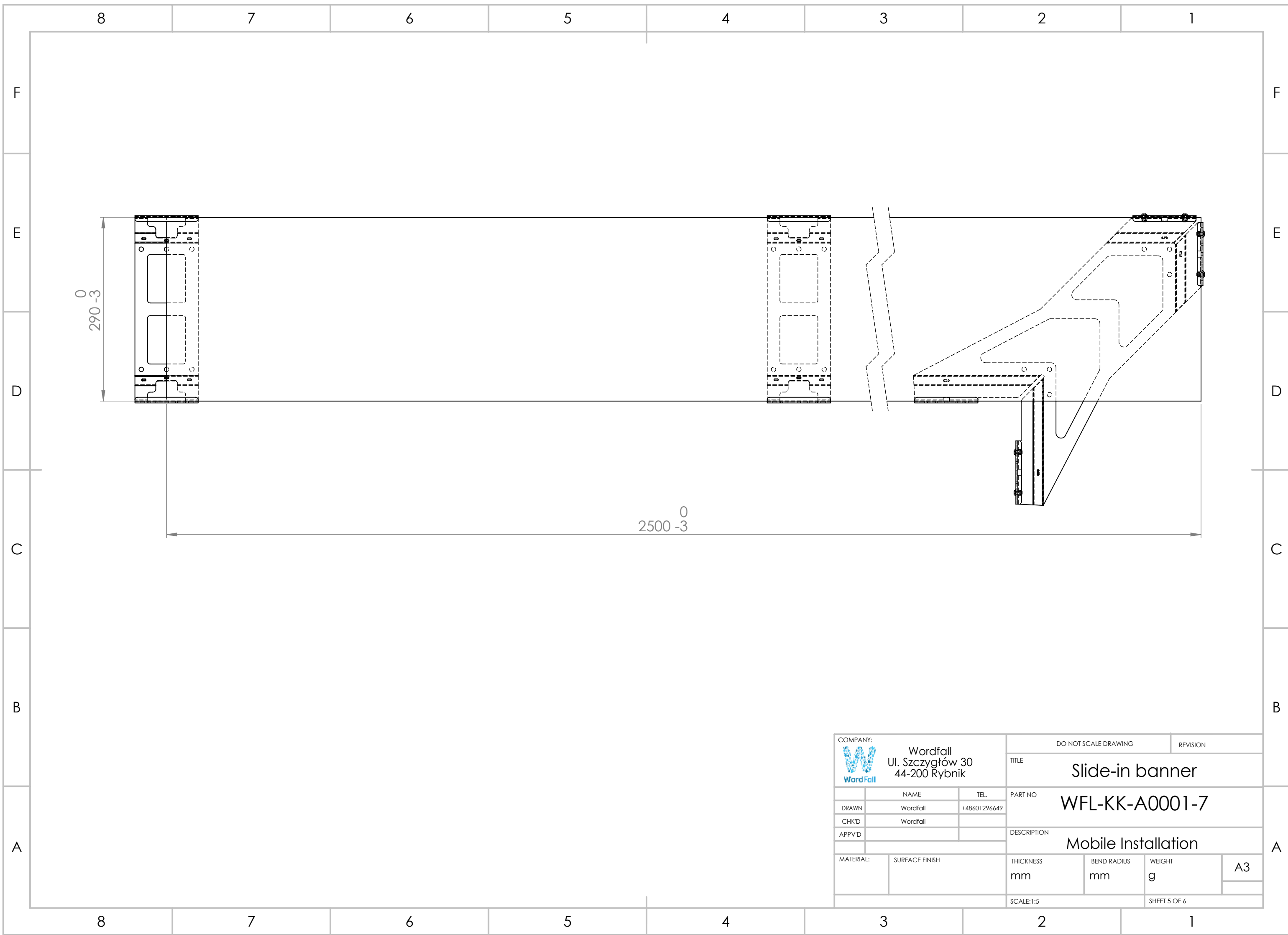
- Any reasonable height and shape
- Weight: 1,5kg per banner holder
- Holes diameter: 6-7mm, holes should be already drilled before the installation. Our technicians will not be equipped to drill holes at the place



Clamps used only for slide-in banners


M5 screws used only for screw-fixed banner

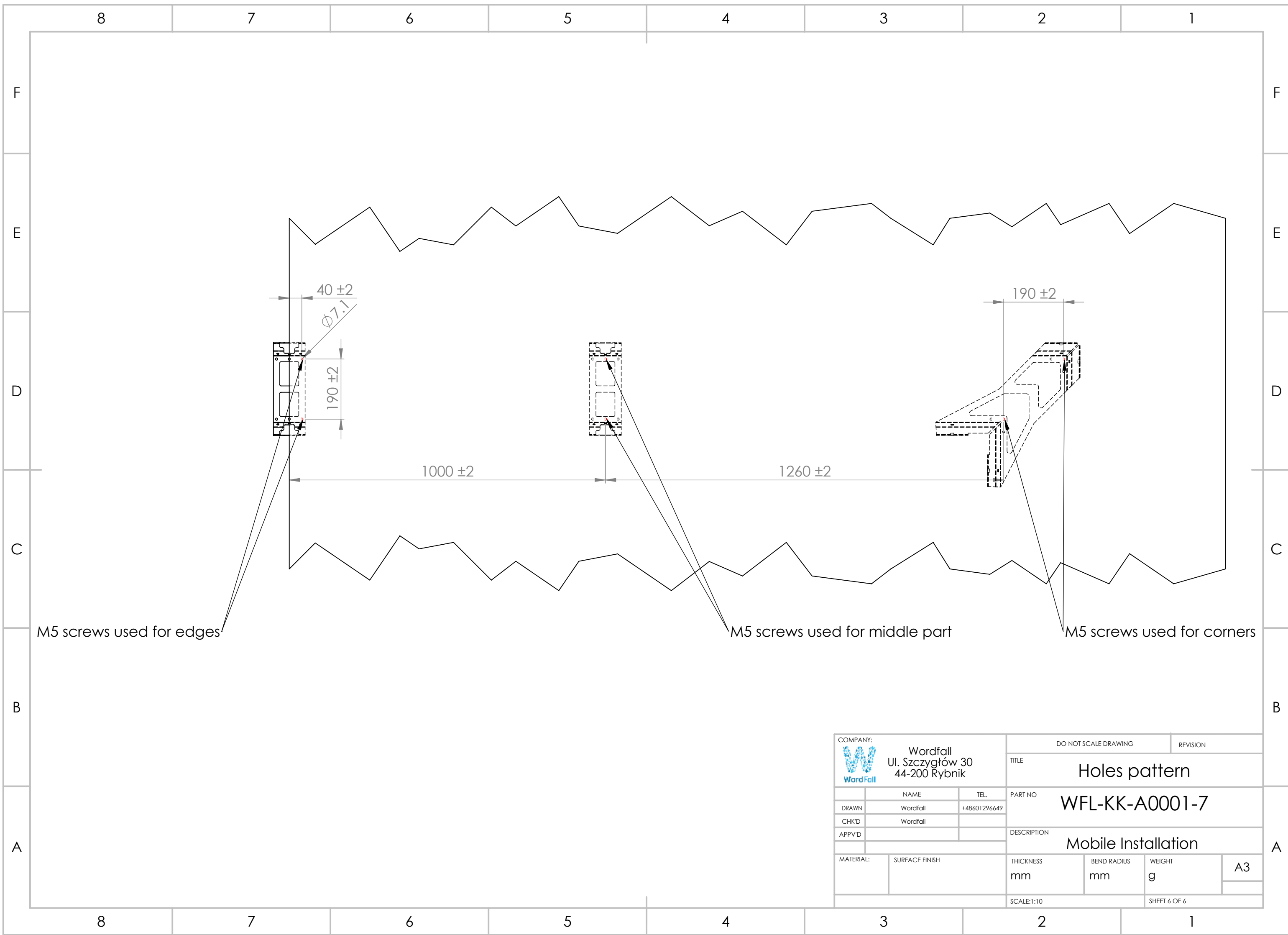
|  |  |                      |  |                                  |  |
|--|--|----------------------|--|----------------------------------|--|
| COMPANY:  Wordfall<br>Ul. Szczygłów 30<br>44-200 Rybnik |  | DO NOT SCALE DRAWING |  | REVISION                         |  |
| DRAWN: Wordfall  |  | TEL: +48601296649    |  | TITLE: Standard banner holder    |  |
| CHK'D: Wordfall  |  | APPV'D:              |  | PART NO: WFL-KK-A0001-7          |  |
| MATERIAL:  |  | SURFACE FINISH:      |  | DESCRIPTION: Mobile Installation |  |
| THICKNESS: mm  |  | BEND RADIUS: mm      |  | WEIGHT: g                        |  |
| SCALE: 1:2   |  | SHEET 4 OF 6         |  | A3                               |  |



290<sup>0</sup>-3

2500<sup>0</sup>-3


|  |  |                      |             |                     |    |
|--|--|----------------------|-------------|---------------------|----|
| COMPANY:<br> <b>Wordfall</b><br>Ul. Szczygłów 30<br>44-200 Rybnik |  | DO NOT SCALE DRAWING |             | REVISION            |    |
| DRAWN  |  | NAME                 |             | TITLE               |    |
| CHK'D  |  | Wordfall             |             | Slide-in banner     |    |
| APPV'D   |  | TEL.                 |             | PART NO             |    |
|  |  | +48601296649         |             | WFL-KK-A0001-7      |    |
| MATERIAL:  |  | SURFACE FINISH       |             | DESCRIPTION         |    |
|  |  |                      |             | Mobile Installation |    |
|  |  | THICKNESS            | BEND RADIUS | WEIGHT              | A3 |
|  |  | mm                   | mm          | g                   |    |
|  |  | SCALE:1:5            |             | SHEET 5 OF 6        |    |



M5 screws used for edges

M5 screws used for middle part

M5 screws used for corners

|  |  |                      |  |                                  |                 |
|--|--|----------------------|--|----------------------------------|-----------------|
| COMPANY:  Wordfall<br>Ul. Szczygłów 30<br>44-200 Rybnik |  | DO NOT SCALE DRAWING |  | REVISION                         |                 |
| DRAWN: Wordfall  |  | TEL: +48601296649    |  | TITLE: Holes pattern             |                 |
| CHK'D: Wordfall  |  | APPV'D:              |  | PART NO: WFL-KK-A0001-7          |                 |
| MATERIAL:  |  | SURFACE FINISH:      |  | DESCRIPTION: Mobile Installation |                 |
|  |  |                      |  | THICKNESS: mm                    | BEND RADIUS: mm |
|  |  |                      |  | WEIGHT: g                        | A3              |
|  |  |                      |  | SCALE: 1:10                      |                 |
|  |  |                      |  | SHEET 6 OF 6                     |                 |